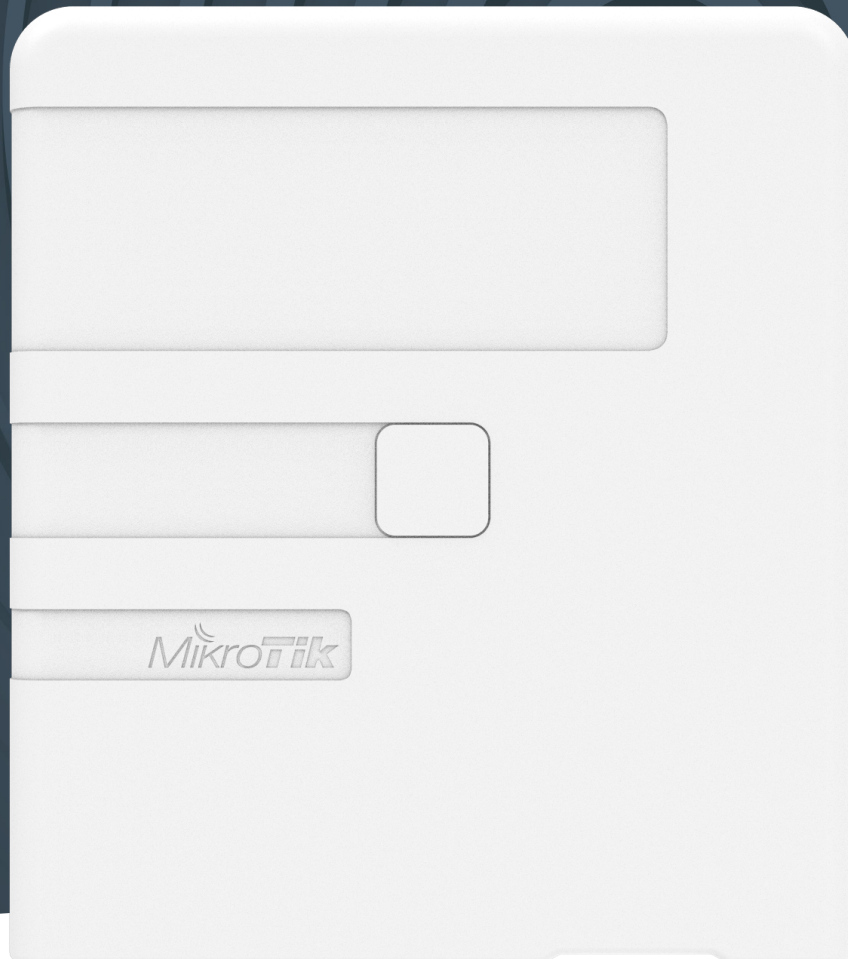


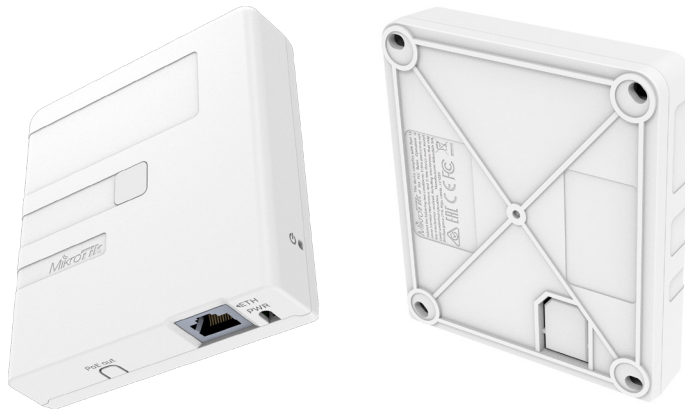
The MicroTik logo is displayed in white text on a red rectangular background. The logo features a stylized 'M' with a curved line above it, followed by the word 'ikroTik' in a bold, sans-serif font.

---

## GPEN 11

The GPEN11 is a PoE injector that can be easily mounted on a wall, use it to power your uplink devices and avoid accidental removal of power sources

The GPEN11 is a power injector that can power your uplink devices via PoE. It is part of the GPEN (Gigabit Passive Ethernet Network) concept, which aims to replace GPON installations with lower cost and more easy to deploy Ethernet alternative.



*It also has a designated space for an ISP sticker on the front. Sticker size: 66 x 25 mm (2,5 x 1 Inches).*



GPEN11 can be mounted inside customer premises, next to the wireless router which provides connectivity to the users. The GPEN11 itself will then power the ISP router, whether it is an outdoor wireless unit mounted on the roof or a network switch somewhere in the building. The GPEN unit can be securely attached to a wall or the communications cabinet. The Ethernet cable can be routed either directly through its bottom cable opening or into the wall, as preferred.

## Specifications

|                                |                       |
|--------------------------------|-----------------------|
| Product code                   | GPEN11                |
| Number of 1 GbE Ethernet ports | 2                     |
| Number of DC inputs            | 1                     |
| PoE-out                        | Yes, Passive PoE      |
| Supported input voltage        | 12 - 57 V             |
| Dimensions                     | 92 x 104 x 24 mm      |
| Operating temperature          | -40°C to +70°C tested |

## Included parts



Screw kit